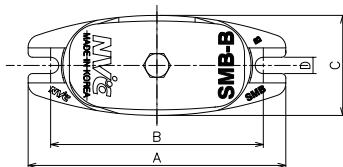
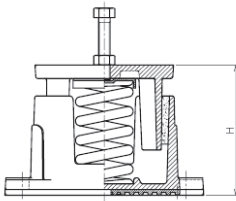
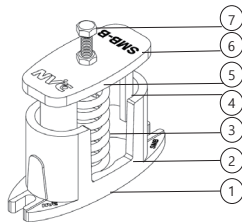


# SMB Spring Mount (Deflection : 25mm)



## ■ Features

As an enclosed spring mount, it has the spring between upper and bottom housings. An anchor hole is on the bottom housing and the tap is on the top housing, which allows level control of the bolt with a level bolt and nut to be used. Plus, the spring cap with a bolt guided hole is at the top of the spring to distribute the load transferred from the level bolt and the anti-frictioner is attached between upper and bottom housings, which somewhat reduces attenuation and friction caused by left-right and top-down relative displacement when the equipment is running. There is a CR pad attached on the bottom of the bottom housing to compensate disadvantages of the spring transferring high frequency due to a kind of surging effect.

## ■ Usage

- ◆ For pumps, refrigerators, compressors and power generators
- ◆ For ventilators
- ◆ For air conditioning units
- ◆ For equipment with a large horizontal reaction

## ■ Specification

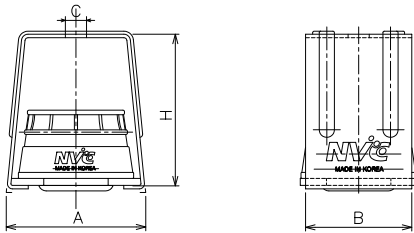
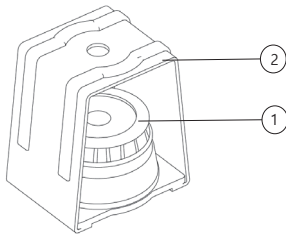
| No. | Name of Components | Material | Standard  |
|-----|--------------------|----------|-----------|
| 1   | Non Skid Pad       | CR       | KS M 6617 |
| 2   | Lower Housing      | GC       | KS D 4301 |
| 3   | Coil Spring        | SUP9     | KS B 2402 |
|     |                    | HSW3     | KS B 2403 |
| 4   | Anti-Frictioner    | SPONGE   | -         |
| 5   | Spring Cap         | SS400    | KS D 3503 |
| 6   | Upper Housing      | GC       | KS D 4301 |
| 7   | Level Bolt         | SS400    | KS B 1002 |

## ■ Dimension & Selection Guide

| Type       | Capacity (kgf) | Spring Constant (kgf/mm) | Weight (kgf) | Color  | Dimension(mm) |     |     |    |     |            |
|------------|----------------|--------------------------|--------------|--------|---------------|-----|-----|----|-----|------------|
|            |                |                          |              |        | A             | B   | C   | D  | H   | Level Blot |
| SMB-A-10   | 10             | 0.4                      | 1.16         | Pink   | 146           | 120 | 60  | 12 | 102 | M10x60     |
| SMB-A-25   | 25             | 1.0                      | 1.20         | Yellow |               |     |     |    |     |            |
| SMB-A-50   | 50             | 2.0                      | 1.34         | Red    |               |     |     |    |     |            |
| SMB-A-75   | 75             | 3.0                      | 1.34         | Black  |               |     |     |    |     |            |
| SMB-A-100  | 100            | 4.0                      | 1.30         | Blue   |               |     |     |    |     |            |
| SMB-B-100  | 100            | 4.0                      | 3.64         | Blue   | 206           | 170 | 80  | 13 | 135 | M12x65     |
| SMB-B-150  | 150            | 6.0                      | 3.64         | Brown  |               |     |     |    |     |            |
| SMB-B-200  | 200            | 8.0                      | 3.70         | White  |               |     |     |    |     |            |
| SMB-B-300  | 300            | 12.0                     | 3.94         | Orange |               |     |     |    |     |            |
| SMB-B-400  | 400            | 16.0                     | 3.86         | Pink   |               |     |     |    |     |            |
| SMB-C-500  | 500            | 20.0                     | 6.00         | Green  | 230           | 189 | 100 | 14 | 150 | M16x80     |
| SMB-C-600  | 600            | 24.0                     | 6.06         | Blue   |               |     |     |    |     |            |
| SMB-C-750  | 750            | 30.0                     | 6.14         | Black  |               |     |     |    |     |            |
| SMB-C-1000 | 1000           | 40.0                     | 6.25         | Yellow |               |     |     |    |     |            |
| SMB-C-1200 | 1200           | 48.0                     | 6.30         | Red    |               |     |     |    |     |            |

(NOTE) The mentioned size and scale can be altered to improve the quality performance and capacity of the product without any notice.

# VH50 Rubber Hanger (Deflection : 3.5~13mm)



## Features

RH10 type anti-vibration rubber hanger prevents the transfer of vibration generated from equipment or its parts to the structure, and its housing is strong enough to stand load transferred and avoid resonance. With the open rubber having a static deflection of 3.5~13 mm, it can maintain the system's natural frequency down to 5~12 Hz.

## Usage

- ◆ For machine rooms, ventilators in air conditioning rooms and ducts
- ◆ For small fan and duct in line fan
- ◆ For structures suspended from the ceiling of, for example, studios and acoustical laboratories
- ◆ For ceiling mounted FCU

## Specification

| No. | Name of Components | Material | Standard  |
|-----|--------------------|----------|-----------|
| 1   | Rubber Mount       | CR       | KS M 6617 |
| 2   | Hanger Housing     | SS400    | KS D 3503 |

## Dimension & Selection Guide

| Type   | Capacity (kgf) | Hardness (Hs) | Deflection (mm) | Weight (kg) | Dimension(mm) |    |     |     |              |
|--------|----------------|---------------|-----------------|-------------|---------------|----|-----|-----|--------------|
|        |                |               |                 |             | A             | B  | C   | H   | Hanging Bolt |
| VH50-A | 25~100         | 60±5          | 3.5~13          | 0.36        | 66            | 50 | Ø12 | 80  | M10          |
| VH50-B | 150~400        |               | 5.0~13          | 0.76        | 91            | 70 | Ø14 | 102 | M12          |
| VH50-C | 500~750        |               | 6.7~13          | 1.24        | 105           | 75 | Ø20 | 120 | M16          |

(NOTE) The mentioned size and scale can be altered to improve the quality performance and capacity of the product without any notice.

## VH50 Test Data

